

Shopping Emergence CDG 2EK

Un dispositif stratégiquement positionné au-dessus du Duty-Free pour une émergence optimale.

- ◇ Paris-CDG 2EK – Départs – Espace boutique
- ◇ 5,1 millions de passagers attendus aux départs de CDG 2EK en 2025
- ◇ 1 lightbox de 12m² (6,49 x 1,91m)

98 200 € / 1 mois
264 300 € / 3 mois
477 000 € / 6 mois
Pour 1 an : contactez-nous.
Tarifs bruts hors frais techniques.

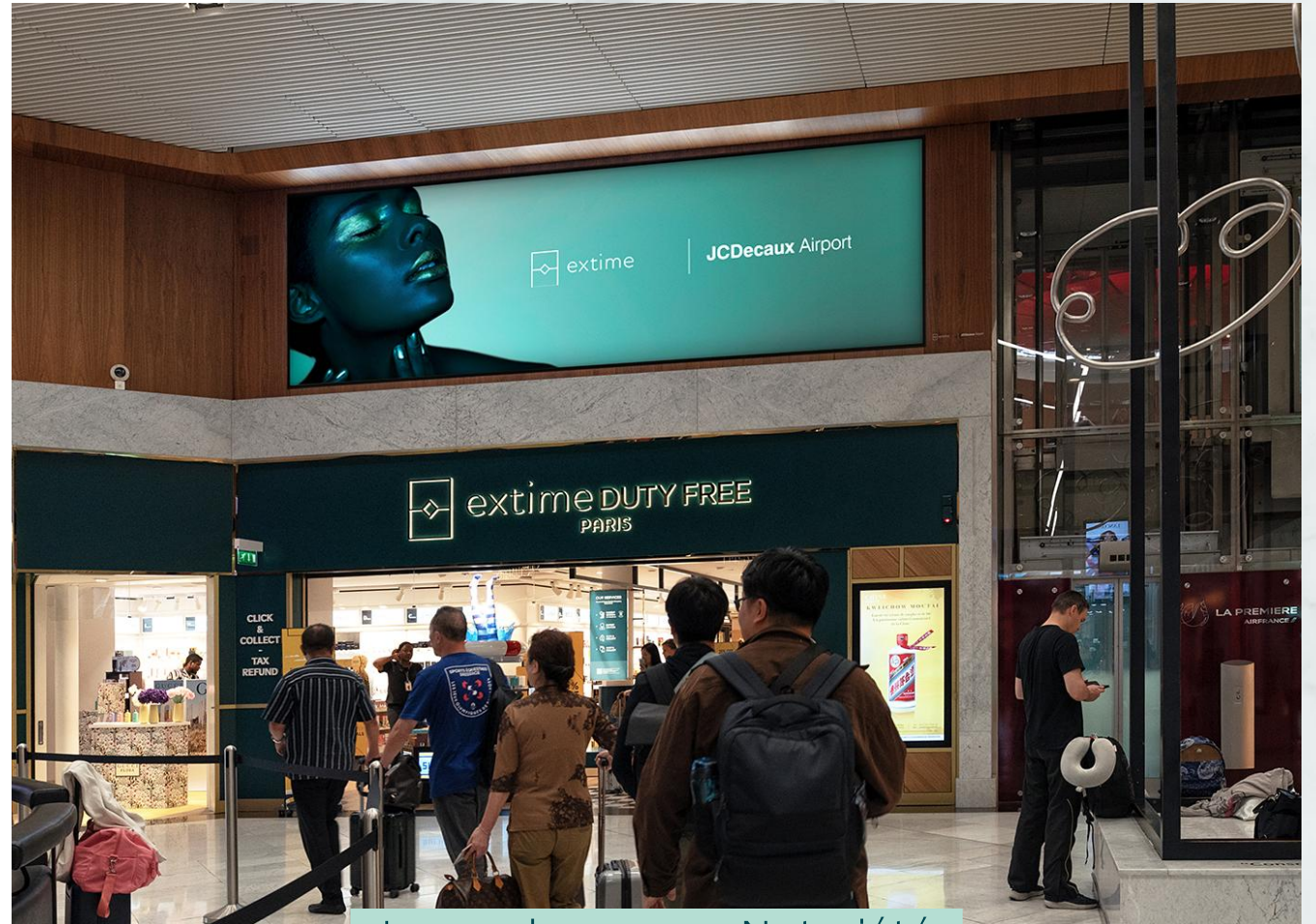


Image de marque, Notoriété
& Conversion



extime

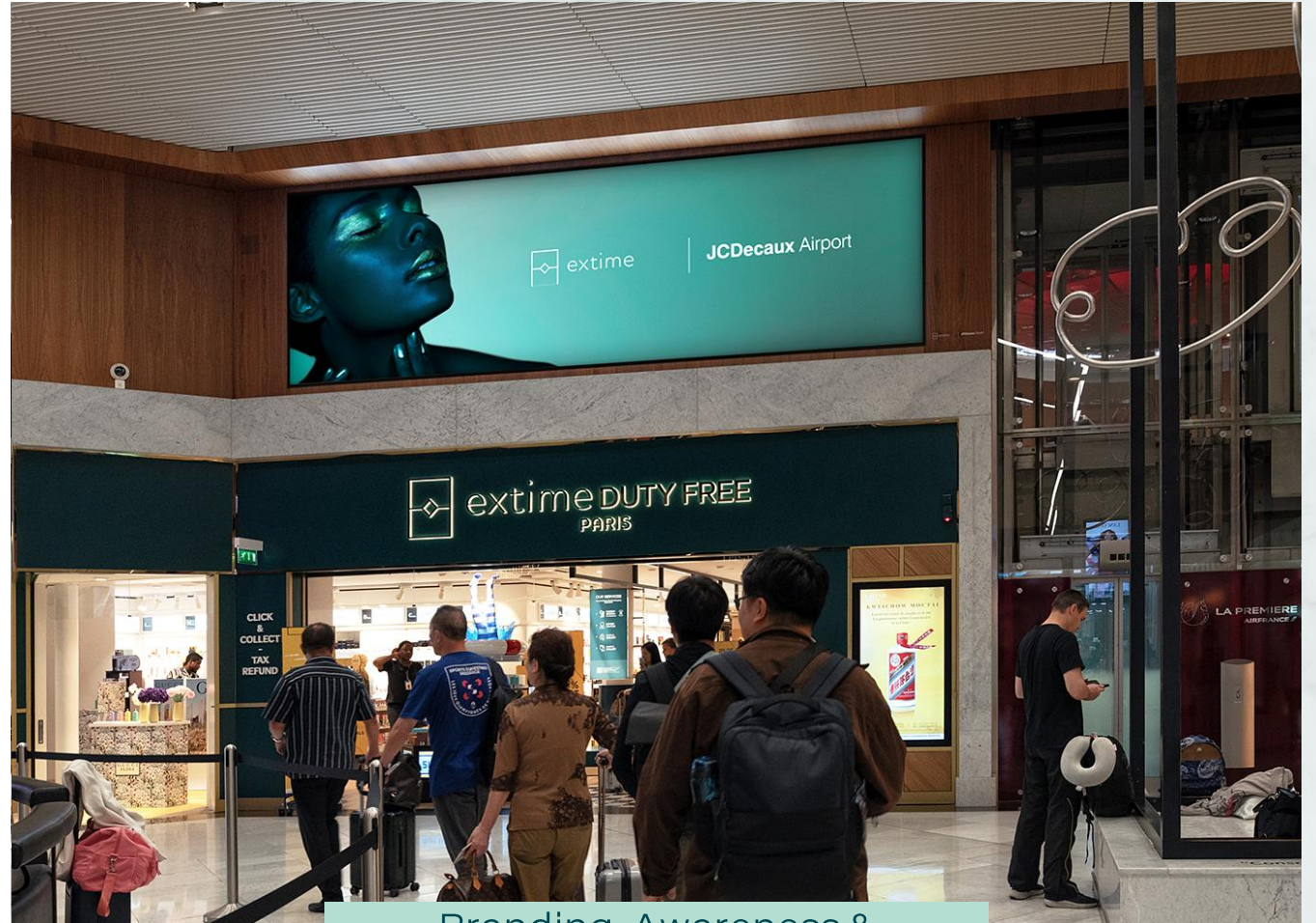
JCDecaux Airport

Shopping Emergence CDG 2EK

Strategically positioned above the Duty-Free for optimum emergence.

- ◆ Paris-CDG 2EK – Departures – Shopping area
- ◆ 5,1M passengers expected at CDG 2E Gate K departures in 2025
- ◆ 1 lightbox – 12sqm (6,49 x 1,91m)

98 200 € / 1 month
264 300 € / 3 months
477 000 € / 6 months
For 1 year: contact us.
Gross rate excluding technical fees.



Branding, Awareness &
Conversion



extime

JCDecaux Airport

Information & photomontage non-contractual ; Source: 2025 Forecasts Extime JCDecaux Airport
based on ForwardKeys Traveller Statistics data (March 2025)